

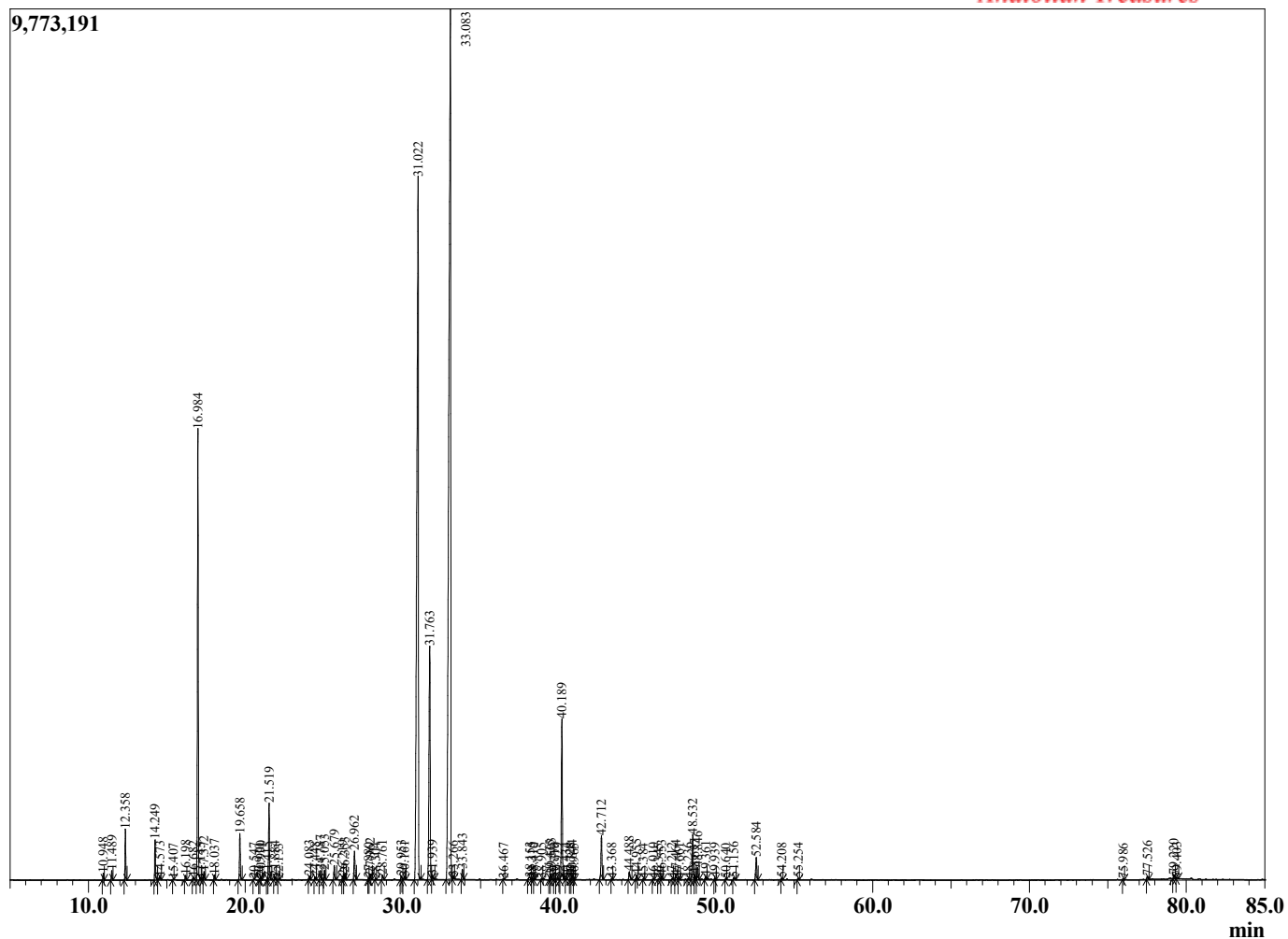
Sample Information

Sample Type : Essential Oil
 Sample Name : Cymbopogon citratus
 Injection : 0.10
 Volume :

Lemongrass Haiti
 Lot# HAK23-KK
 Country: Haiti



Chromatogram Cymbopogon citratus



| R.Time | Name | Area% |
|--------|--------------------------|-------|
| 10.948 | 3-methyl Apopinene | 0.11 |
| 11.489 | alpha-Pinene | 0.16 |
| 12.358 | Camphene | 0.89 |
| 14.249 | 6-Methyl hept-5-en-2-one | 0.76 |
| 14.573 | Dehydrocinole | 0.10 |
| 15.407 | Octanal | 0.01 |
| 16.198 | alpha-Terpinene | 0.09 |
| 16.682 | para-Cymene | 0.05 |
| 16.984 | Limonene | 9.40 |
| 17.145 | 1,8-Cineole | 0.01 |
| 17.372 | cis-beta-Ocimene | 0.16 |
| 18.037 | trans-beta-Ocimene | 0.10 |
| 19.658 | 4-Nonanone | 0.95 |
| 20.547 | Terpinolene | 0.02 |
| 20.910 | 4-Nonanol | 0.02 |
| 20.990 | Rosefuran | 0.08 |
| 21.415 | Perillene | 0.04 |
| 21.519 | Linalool | 1.58 |
| 21.884 | alpha-Pinene oxide | 0.07 |
| 22.133 | p-Menth-3-en-9-al | 0.02 |
| 24.083 | Epiphocitral A | 0.08 |
| 24.448 | exo-Isocitral | 0.06 |
| 24.787 | trans-Chrysanthemal | 0.21 |
| 25.053 | Citronellal | 0.21 |
| 25.679 | Isoneral | 0.33 |
| 26.219 | Rose furan oxide | 0.08 |
| 26.353 | endo-Borneol | 0.15 |
| 26.962 | Isogeranial | 0.70 |
| 27.880 | Unidentified | 0.02 |
| 27.962 | alpha-Terpineol | 0.15 |
| 28.304 | trans-Isopiperitenol | 0.02 |
| 28.761 | Unidentified | 0.11 |
| 29.953 | Nerol | 0.09 |
| 30.161 | Citronellol | 0.08 |
| 31.022 | Neral | 27.24 |
| 31.763 | Geraniol | 6.70 |
| 31.939 | Piperitone | 0.09 |
| 33.083 | Geranial | 39.81 |
| 33.266 | 4-Undecanone | 0.05 |
| 33.843 | trans-Carvone oxide | 0.22 |
| 36.467 | Methyl geranate | 0.02 |
| 38.153 | cis-Geranic acid | 0.10 |
| 38.315 | Citronellyl acetate | 0.03 |
| 38.410 | Eugenol | 0.02 |
| 38.905 | cis-Geranyl acetate | 0.02 |
| 39.435 | Unidentified | 0.08 |
| 39.503 | Isoledene | 0.14 |
| 39.719 | Unidentified | 0.03 |
| 39.929 | alpha-Copaene | 0.05 |
| 40.189 | trans-Geranyl acetate | 3.80 |
| 40.434 | beta-Bourbonene | 0.01 |
| 40.728 | cis-Cadina-1(6),4-diene | 0.02 |
| 40.844 | beta-Elemene | 0.09 |
| 40.965 | Unidentified | 0.02 |
| 42.712 | beta-Caryophyllene | 1.16 |
| 43.368 | Cadinene isomer | 0.02 |

| R.Time | Name | Area% |
|--------|---------------------------|--------|
| 44.488 | trans-Isoeugenol | 0.23 |
| 44.955 | alpha-Humulene | 0.11 |
| 45.384 | Unidentified | 0.02 |
| 46.010 | trans-Cadina-1(6),4-diene | 0.03 |
| 46.345 | Unidentified | 0.03 |
| 46.553 | Germacrene D | 0.10 |
| 47.212 | gamma-Amorphene | 0.03 |
| 47.464 | Cubebol | 0.11 |
| 47.661 | alpha-Murolene | 0.03 |
| 48.236 | Unidentified | 0.03 |
| 48.532 | gamma-Cadinene | 1.15 |
| 48.657 | Cubebol | 0.13 |
| 48.846 | delta-Cadinene | 0.31 |
| 49.361 | cis-gamma-Bisabolene | 0.08 |
| 49.939 | Cadinene isomer | 0.04 |
| 50.640 | alpha-Elemol | 0.02 |
| 51.156 | Geranyl butyrate | 0.07 |
| 52.584 | Caryophyllene oxide | 0.58 |
| 54.208 | Humulene epoxide II | 0.04 |
| 55.254 | Epicubenol | 0.04 |
| 75.986 | Unidentified | 0.02 |
| 77.526 | Unidentified | 0.08 |
| 79.220 | Thiogeraniol | 0.10 |
| 79.403 | Unidentified | 0.02 |
| | | 100.00 |